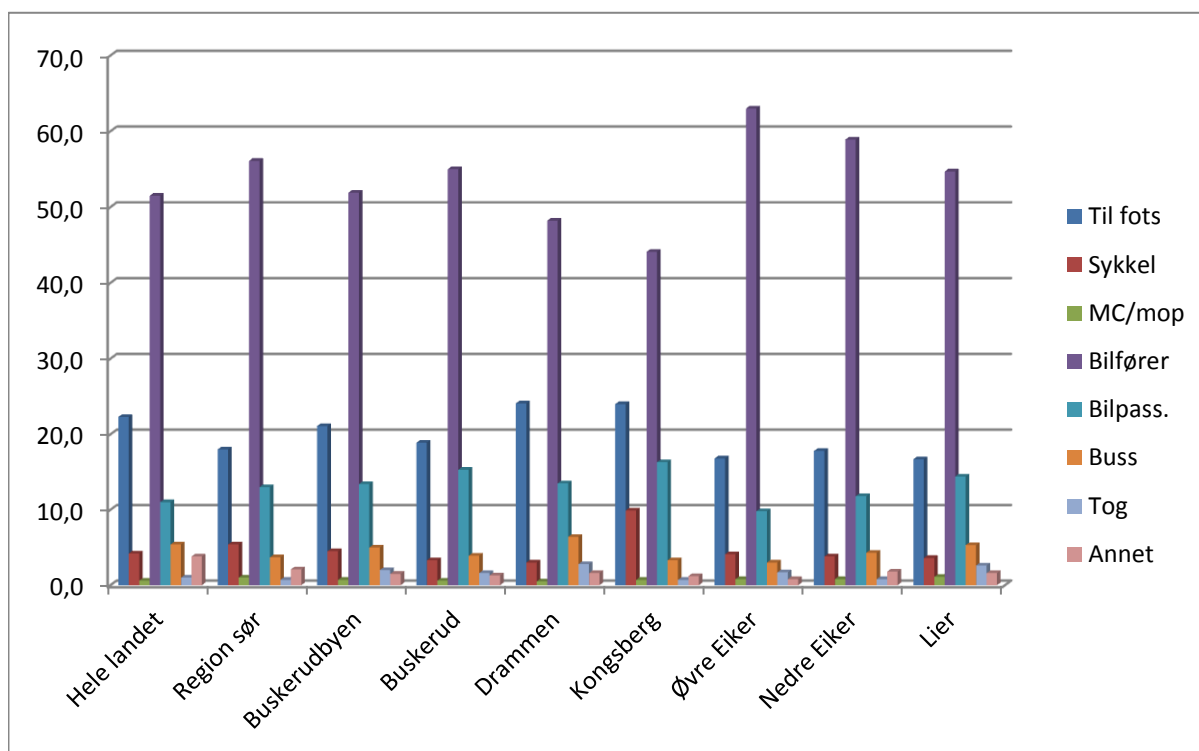
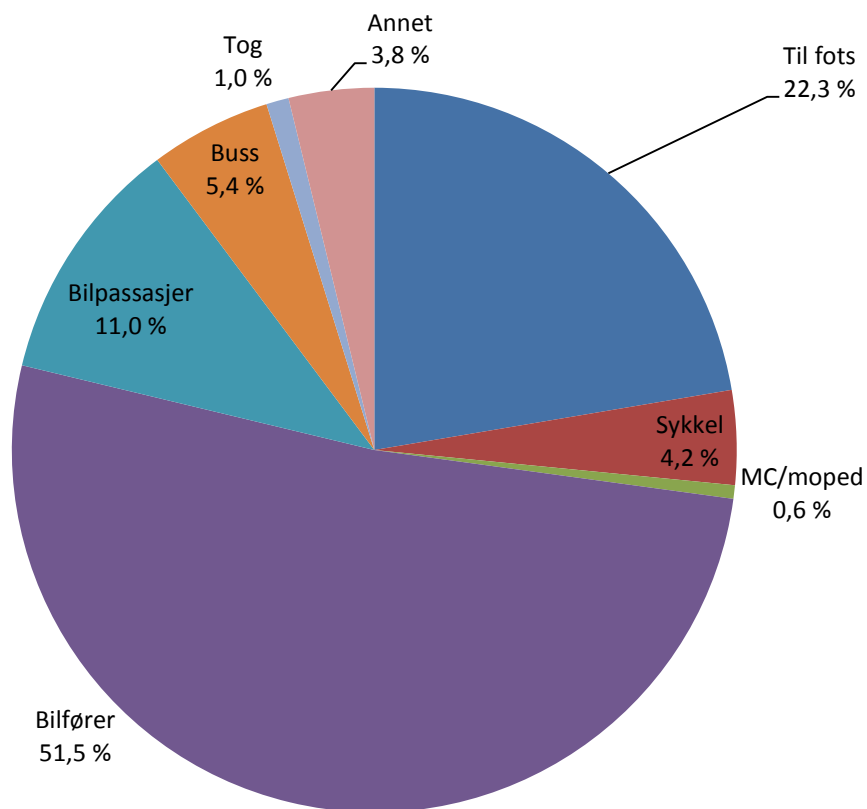


Reisemiddelfordeling i Buskerud 2009

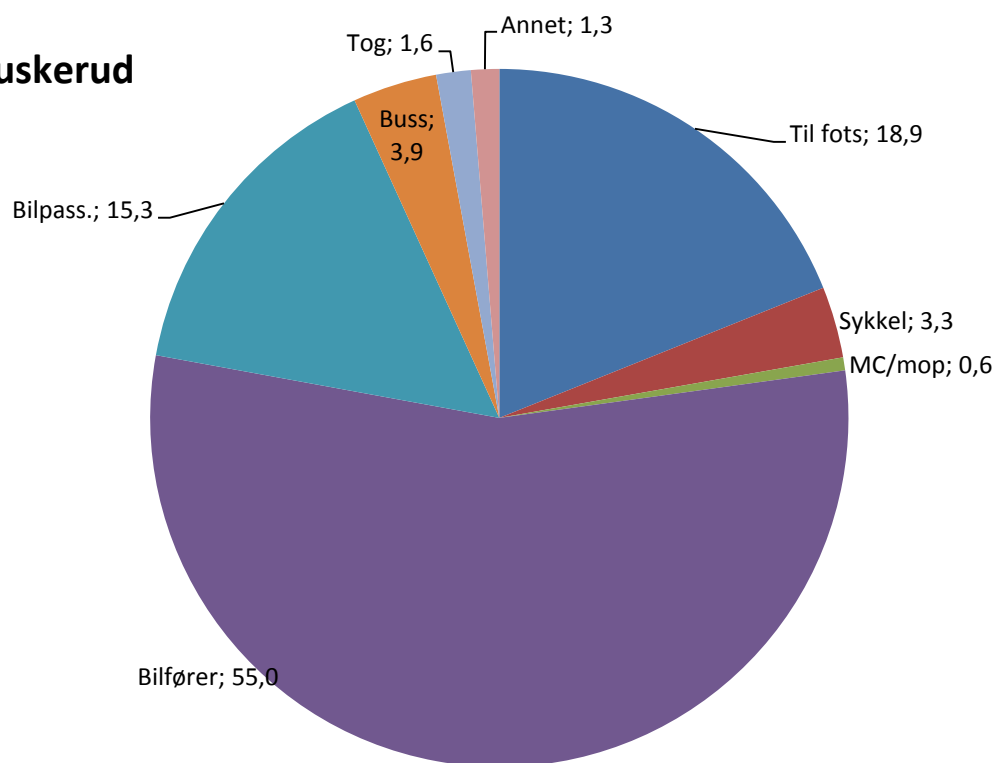
Bosted	Til fots	Sykkel	MC/mop	Bilfører	Bilpass.	Buss	Tog	Annet	Sum
Hele landet	22,3	4,2	0,6	51,5	11,0	5,4	1,0	3,8	99,8
Region sør	18,0	5,4	1,0	56,1	13,0	3,7	0,7	2,1	100,0
Buskerudbyen	21,1	4,5	0,7	51,9	13,4	5,0	2,0	1,5	100,1
Buskerud	18,9	3,3	0,6	55,0	15,3	3,9	1,6	1,3	99,9
Drammen	24,1	3,0	0,5	48,2	13,5	6,4	2,8	1,6	100,1
Kongsberg	24,0	9,9	0,7	44,1	16,3	3,3	0,7	1,2	100,2
Øvre Eiker	16,8	4,1	0,8	63,0	9,8	3,0	1,7	0,8	100,0
Nedre Eiker	17,8	3,8	0,8	58,9	11,8	4,3	0,8	1,8	100,0
Lier	16,7	3,6	1,1	54,7	14,4	5,3	2,6	1,6	100,0



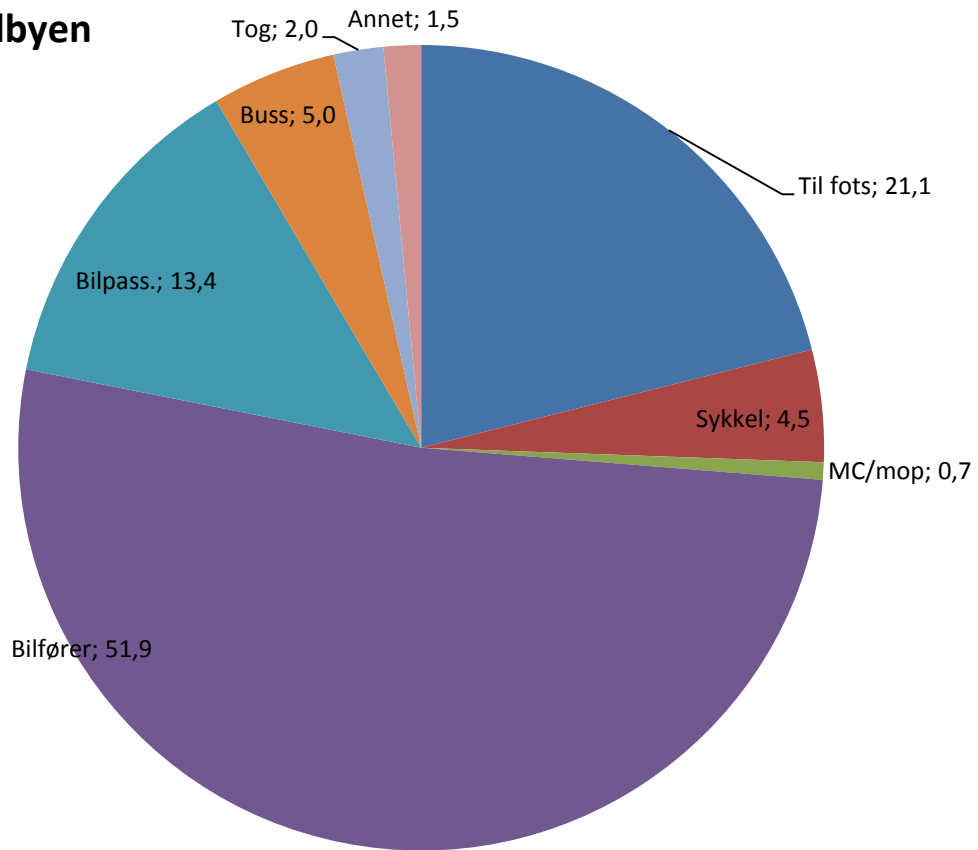
Hele landet



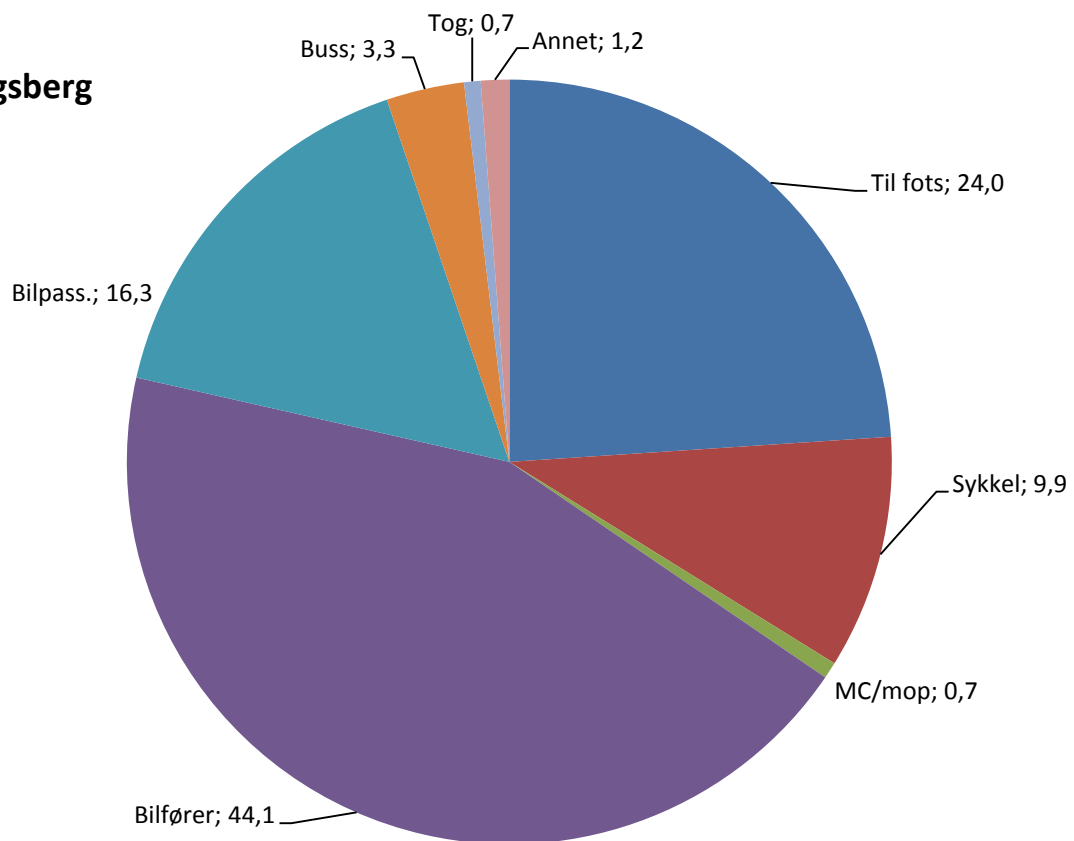
Buskerud



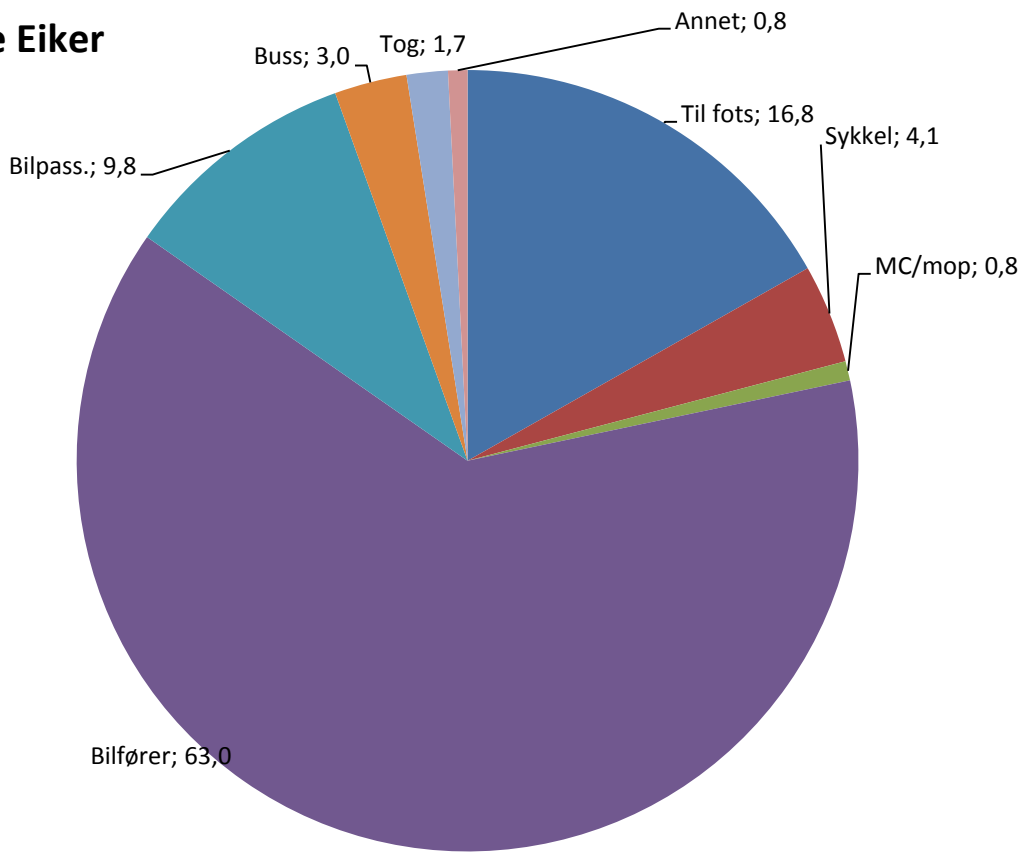
Buskerudbyen



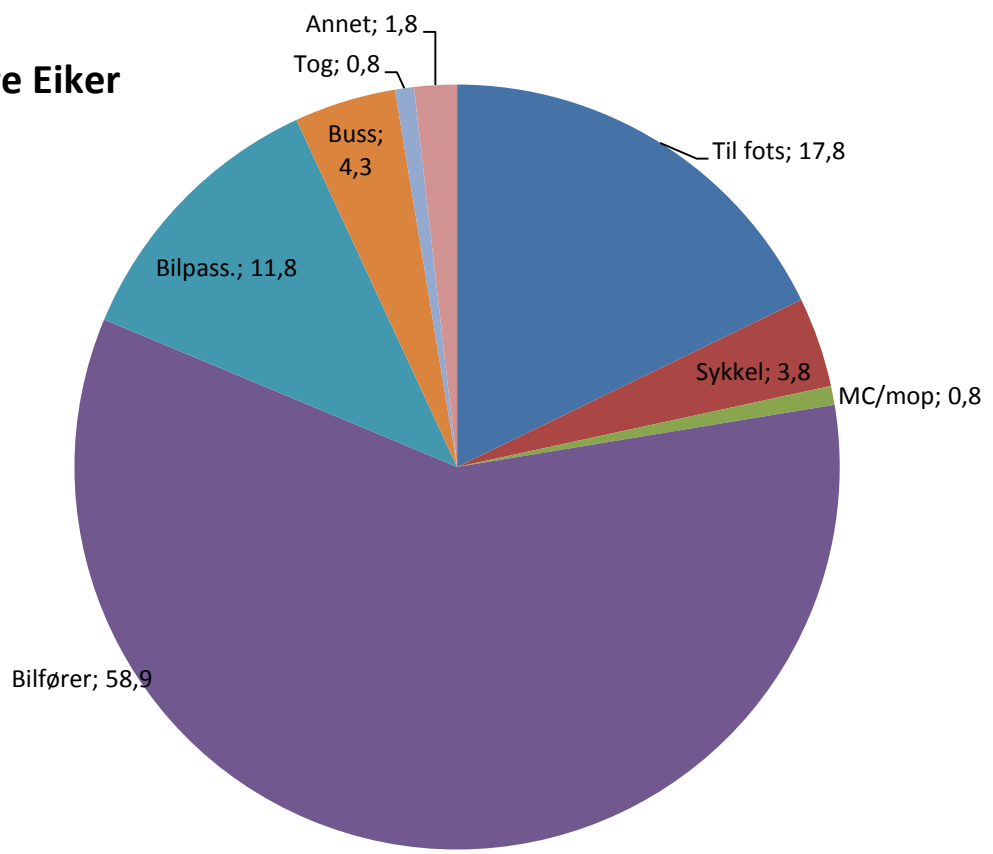
Kongsberg



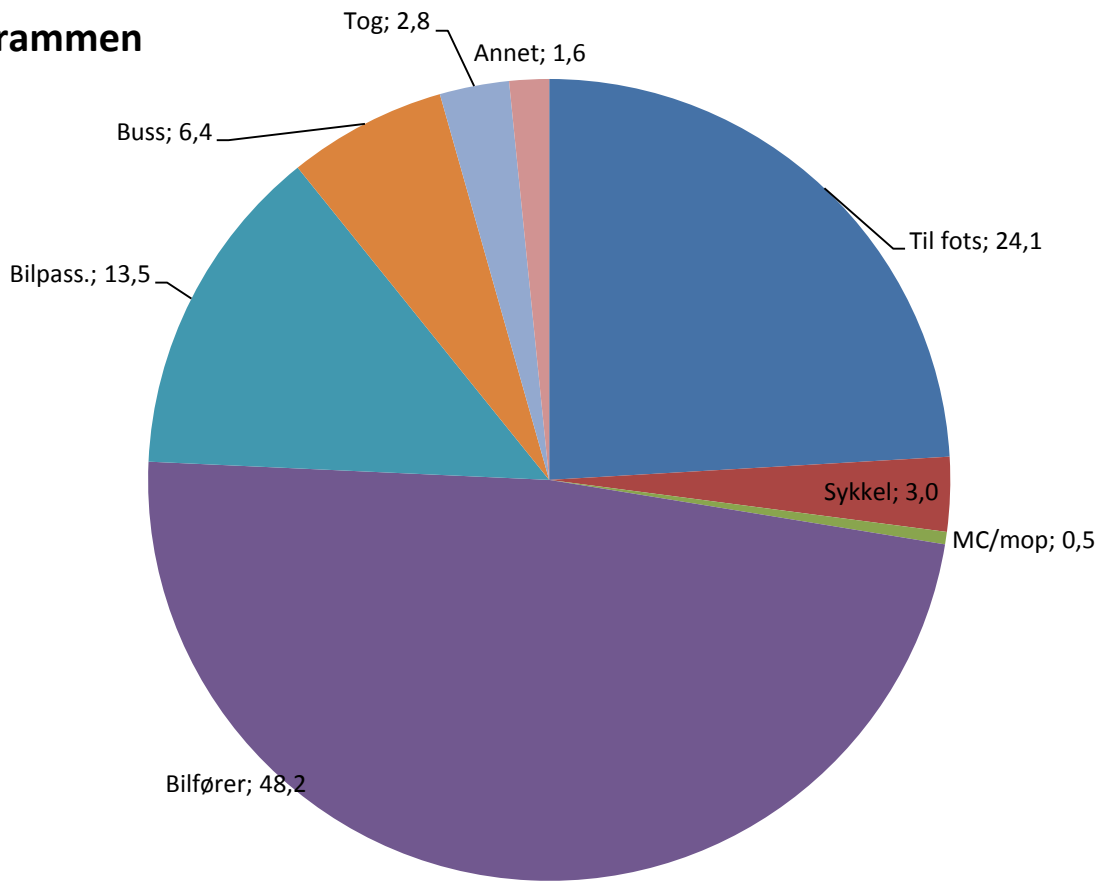
Øvre Eiker



Nedre Eiker



Drammen



Lier

